

WAYSIDE PANELS

ESTRA



ESTRA

CATEGORY DESCRIPTION



With a leading expertise in DC traction power substations, Sécheron is your major partner for electrification of DC traction networks, covering all activities from network design, calculation, engineering, to the production of the DC systems.

ESTRA product category covers all key equipment applied in DC distribution, integrating DC high-speed circuit breakers, disconnect switches, load break switches, control & protection relays, measuring amplifiers, etc. We can offer tailor made solutions based on modular concepts and standard products. Our equipment is developed on world leading technology and proven worldwide design and acceptance. Our customers and partners benefit through this offer of all our system skills and experience.

MAIN CHARACTERISTICS

Sécheron can provide a complete range of wayside cubicles in metallic or polyester execution. Cubicles are designed to integrate disconnecting switches, load break switches, contactors or DC high speed circuit breakers.

	Unit	Values	
		Outdoor (metallic type)	Outdoor (polyester type)
Protection degree	-	IP54 / IP55	
Mechanical impact protection	-	IK9 / IK10	
Locking	-	EMKA swing handles - Program 1125	Polyamide GF black EMKA swing handles - Program 1125 + key
Windows	-	1 x for controls 1 x for contact of DS	1 x for controls or no windows
Standard fixing points	[mm]	4 x ø16	4 x ø16
Weight (empty cabinet)	[kg]	160	40
Width	[mm]	835	850 / 1050
Depth	[mm]	825	900
Height	[mm]	1635	1660 / 1680
Material	-	Welded frame Steel external plates with PC window	Fiberglass – 4 mm Halogen Free Fire Retardant resin Self-extinguishing PC window
Treatment	-	RAL - Priming powder + UV-light and solvent resistant coating system Anti-graffiti upon request	RAL - Fire Retardant spray Gelcoat + UV stabilizer Anti-graffiti upon request

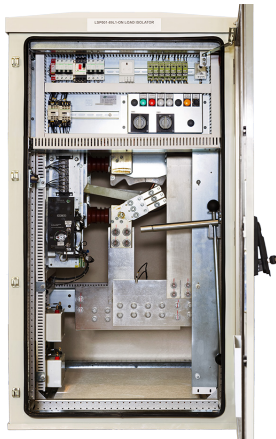
Photo



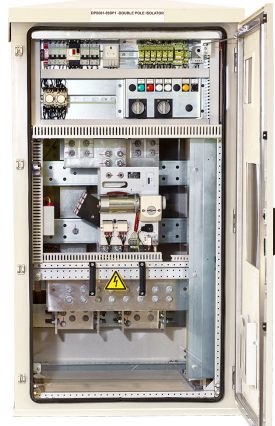
Customized dimensions upon request.

APPLICATIONS

Load break switch



Disconnecter



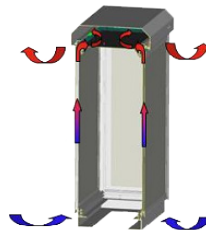
VLD - outdoor application



OPTIONS

Double wall solution

Reliable solution to reach efficient thermal insulation, which is preventing condensation.



Steel based stand upon request.

THERMAL MANAGEMENT

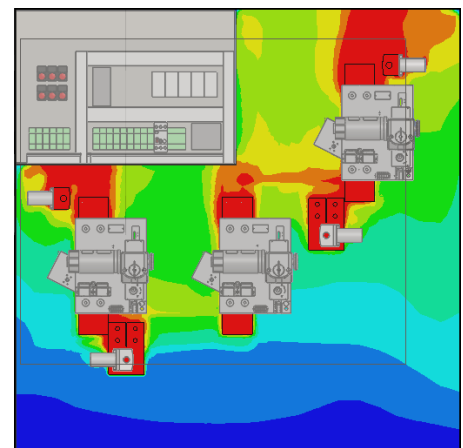
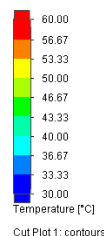
The technology of cooling

System solutions combine the power of different products and optimise the efficiency, environmental performance and safety by consistently providing the required refrigerant in the required temperature, or by, even after switching off the unit, preventing condensation in the control cabinet.

Thermal studies applicable for customized solutions.

Two basic cooling methods

- Natural convection: Use of louvers or grills with filters.
- Forced convection: Use of filterfans.





Sécheron SA

Rue du Pré-Bouvier 25
1242 Satigny - Geneva
CH-Switzerland

www.secheron.com

Tel: +41 22 739 41 11
Fax: +41 22 739 48 11
tps@secheron.com

Copyright © • 2022 • Sécheron SA

This document is not contractual and contains information corresponding to the level of technology at the date of printing. Sécheron reserves the right to modify and/or improve the product, whose characteristics are described in these documents, as required by new technology at any time. It is the purchaser's responsibility to inform himself, no matter what the circumstances, of the product's maintenance conditions and requirements. Sécheron reserves all rights, especially those arising from our "General Delivery Conditions".